

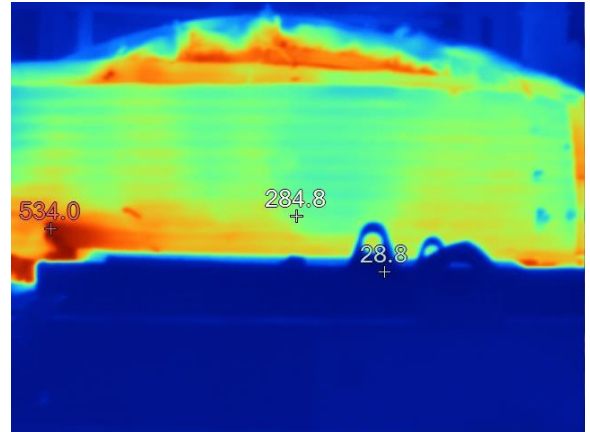
Fuel saving by improving furnace door insulation

Location: A steel re-rolling mill, Bangladesh

Process: Steel re-heating furnace

Before

- In reheating furnace, the furnace door was poorly insulated, resulting in high heat losses
- Temperature above 530°C was observed at the door surface



After

- Installed a double walled insulated steel door to minimize heat losses
- In-house available material used to fabricate insulated door within the factory



Costs/benefits

Cost: Approx. BDT 15,000

Payback: 1.8 months

Annual savings: BDT 103,000

Contact: Dr. M Balakrishnan, malinib@teri.res.in
 Mr. Rajat Batra, rajat.batra@stenum-asia.org
 Mr. Khandoker Anwar Kamal, project@dhakachamber.com
 Ms. Nizhum Islam Nishi, nishi.fahim@live.com

Disclaimer: This document has been produced with the financial assistance of the European Union. The contents of this document are the sole responsibility of TERI and can under no circumstances be regarded as reflecting the position of the European Union.